

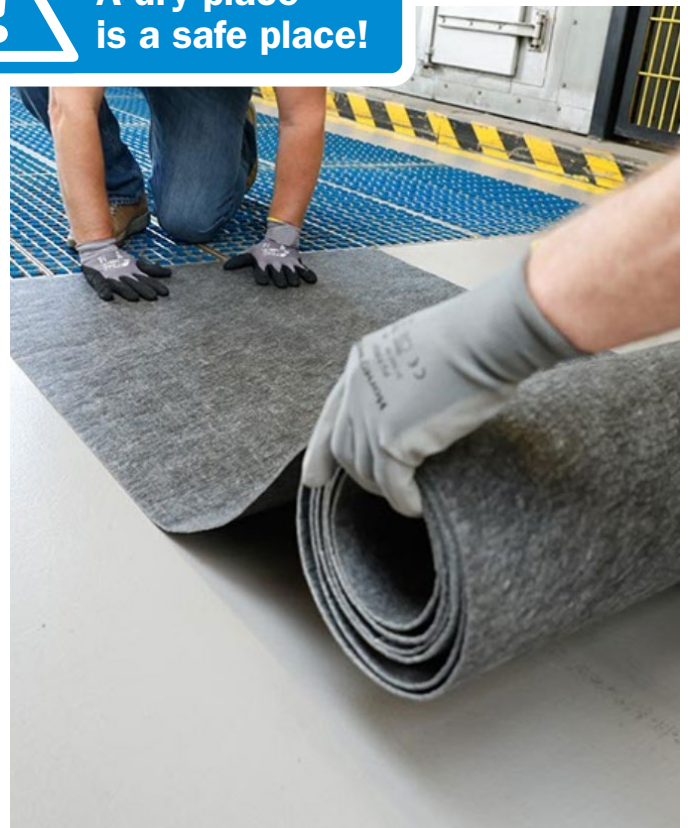
dryzone basic



Dry and clean with every crossing

- Minimizes moisture carry-over
- Dries quickly
- Customizable in width and length
- Self-adhesive on most floor coverings
- Can be retrofitted at any time

Specially developed for the industry, the dryzone basic is an **optional addition** to our cleaning system. The combination ensures **clean and dry tires and rollers** with every crossing.



Technical changes and errors reserved · EN · 11-2024

ProfilGate® dryzone basic



🇩🇪 Montageanleitung 🇬🇧 Assembly manual 🇫🇷 Instructions de montage 🇪🇸 Instrucciones de instalación



Den Untergrund besenrein säubern.
Sweep the floor clean.
Nettoyer la surface.
Barra el suelo hasta que esté libre de polvo.



dryzone basic bündig am ProfilGate® Reinigungsfeld ausrichten.
Align the dryzone basic with the ProfilGate® cleaning field.
Aligner dryzone basic au ras du champ de nettoyage ProfilGate®.
Alinee el dryzone basic a ras con el campo de limpieza ProfilGate®.



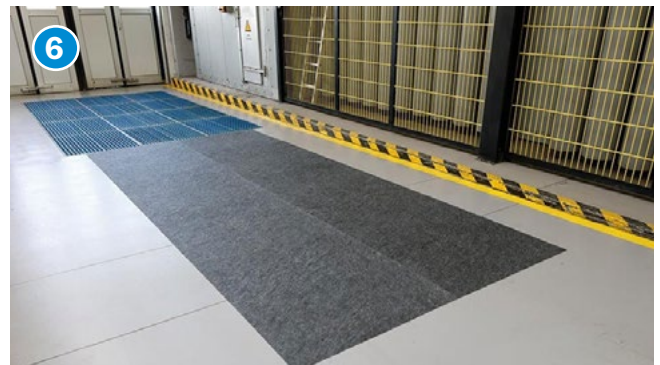
dryzone basic durch festes Andrücken fixieren.
Fix dryzone basic in place by pressing firmly.
Fixer dryzone basic en appuyant fermement.
Fije el dryzone basic presionándolo firmemente.



Restlichen dryzone basic abrollen und mit Druck glattstreichen.
Dazu den Schieber* nutzen.
Unroll the remaining dryzone basic and use the slider* for that.
Dérouler le reste de dryzone basic et le lisser en exerçant une pression. Utiliser pour cela la règle* à aplatisir.
Desenrolle el resto del dryzone basic y alíselo presionando.
Utilice el deslizador* para ello.



Weitere dryzone basic bündig miteinander anbringen.
Install further dryzone basic flush with each other.
Fixer les dryzone basic supplémentaires au ras les uns des autres.
Instale los demás dryzone basic a ras entre sí.



Direkt im Anschluss begehbar und befahrbar. Für eine rückstandslose Entfernung die dryzone basic einfach abziehen.
dryzone basic can be walked and driven on immediately after installation. Simply pull off the dryzone basic to remove it completely.
Praticable directement après l'application. Pour enlever le dryzone basic sans laisser de traces, il suffit de le décoller.
Se puede caminar y transitar sobre él inmediatamente después de la instalación. Para retirarlo sin dejar residuos, simplemente tire del dryzone basic.

*Schieber separat erhältlich *slider available separately
*règle vendue séparément *deslizador disponible por separado